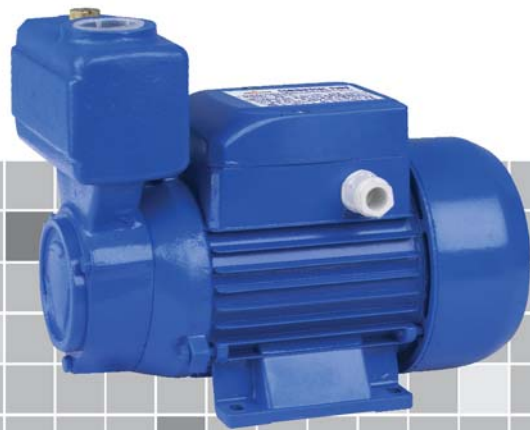


TP Series

SERIES SELF-SUCKING PUMP

TP series self-sucking water pumps are new designed high efficiency household electric pumps, with the motor and the pump mounted together. They are sealed with wear-resistant mechanical sealing, and carry the merits of easy to operate, light weight, high efficiency and relative low consumption of power.

TP series pumps have self-sucking function, which make it more better for use in places that pumping clean water, and request intermission kind of working, but without refilling the water from each restarting of the pumps.



CONSTRUCTION:

PUMP Peripheral

Pump Body: Cast Iron

Impeller: Brass

Mechanical Seal: Carbon / Ceramic / Stainless steel

MOTOR Single Phase Heavy Duty Continuous Work

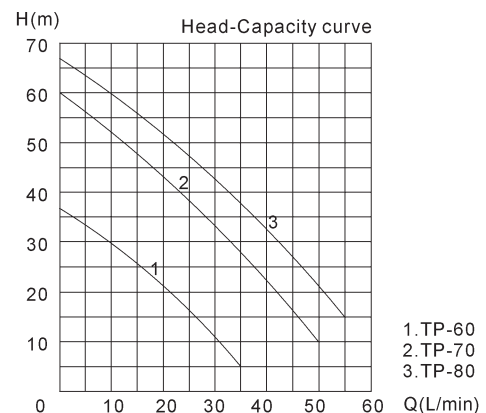
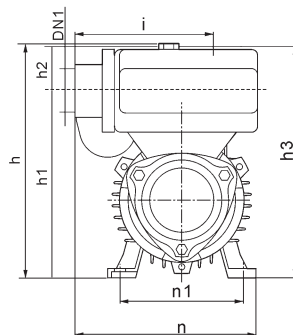
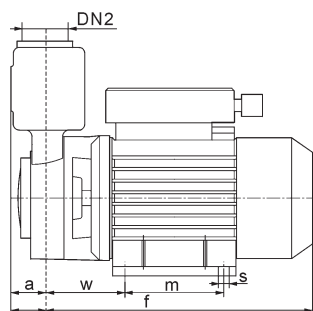
Motor Housing: Aluminium

Shaft: Carbon Steel / Stainless Steel

Insulation: Class B / Class F

Protection: IP44 / IP54

Cooling: External ventilation

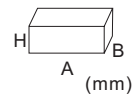


OVERALL & INSTALLATION DIMENSIONS

| Model | DIMENSIONS (mm) | | | | | | | | | | | | | |
|-------|-----------------|-----|----|-----|-----|-----|----|-----|-----|----|-----|-----|----|---|
| | DNA | DNM | a | f | h | h1 | h2 | h3 | i | m | n | n1 | w | s |
| TP-60 | 1" | 1" | 29 | 230 | 192 | 156 | 34 | 190 | 110 | 80 | 150 | 100 | 55 | 7 |
| TP-70 | 1" | 1" | 29 | 260 | 200 | 164 | 34 | 198 | 110 | 90 | 160 | 112 | 62 | 7 |
| TP-80 | 1" | 1" | 29 | 260 | 200 | 164 | 34 | 198 | 110 | 90 | 160 | 112 | 62 | 7 |

PERFORMANCE SPECIFICATIONS

| Model | Power | | Q.max. L/min | H.max. m | Suct.max. m | Speed r.p.m | Inlet/Outlet mm | PACKAGE DIMENSIONS & G.W. | | | |
|-------|-------|------|-----------------|-------------|----------------|----------------|--------------------|---------------------------|-----|-----|-----|
| | HP | kW | | | | | | A | B | H | kg |
| TP-60 | 0.50 | 0.37 | 35 | 36 | 9 | 2850 | 25x25 | 280 | 170 | 210 | 6.8 |
| TP-70 | 0.80 | 0.60 | 50 | 60 | | | 25x25 | 300 | 180 | 220 | 8.8 |
| TP-80 | 1 | 0.75 | 55 | 66 | | | 25x25 | 300 | 180 | 220 | 9.2 |



* 110V, 110V/220V, 60Hz etc. models are available on request.