

PX Series CENTRIFUGAL PUMP

PX series centrifugal pumps are single stage, high efficient electric pumps, consisted of a miniature motor and a single impeller centrifugal pump. They have a good performance in Big Capacity and High Head.

They are widely used in well-pumping, water supplying, decanting, mixing and irrigating for civil, industry and agriculture, etc.



PX-205

CONSTRUCT:

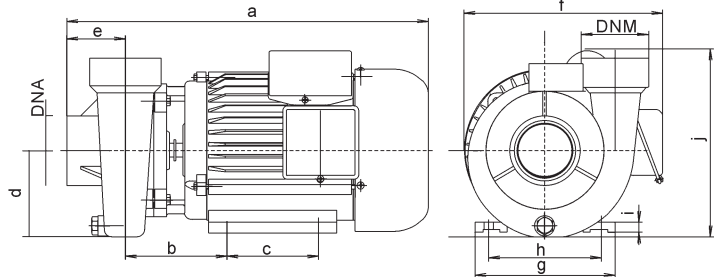
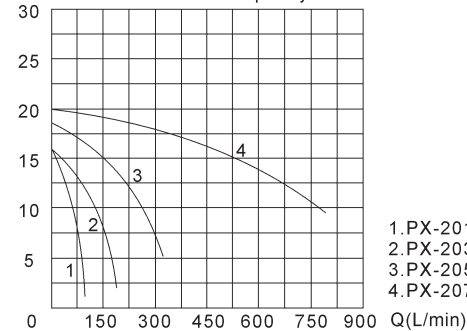
PUMP Peripheral

Pump Body: Cast Iron
Impeller: Brass / Cast Iron
Mechanical Seal: Carbon / Ceramic / Stainless steel

MOTOR Single Phase Heavy Duty Continuous Work

Motor Housing: Cast Iron
Shaft: Carbon Steel / Stainless Steel
Insulation: Class B / Class F
Protection: IP44 / IP54
Cooling: External ventilation

H(m) Head-Capacity curve

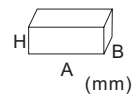


OVERALL & INSTALLATION DIMENSIONS

Model	DIMENSIONS (mm)														
	DNA	DNM	a	b	c	d	e	f	g	h	i	j	k	l	m
PX-201	1"	1"	300	130	75	80	30	190	138	110	10	180	--	--	--
PX-203	1.5"	1.5"	330	155	90	80	45	190	138	110	10	199	--	--	--
PX-205	2"	2"	390	182	100	90	67	226	168	140	10	206	--	--	--
PX-207	3"	3"	405	165	245	122	98	238	185	145	10	280	--	--	--

PERFORMANCE SPECIFICATIONS

Model	Power		Q.max. L/min	H.max. m	Suct.max. m	Speed r.p.m	Inlet/Outlet mm	PACKAGE DIMENSIONS & G.W.			
	HP	kW						A	B	H	kg
PX-201	0.75	0.55	105	16	9	2850	25x25	350	220	230	15.00
PX-203	1	0.75	180	16			40x40	360	220	230	16.50
PX-205	2	1.5	310	18			50x50	430	280	265	22.00
PX-207	3	2.2	800	20			75x75	520	330	310	33.80



* 110V, 110V/220V, 60Hz etc. models are available on request.