

LHF1 Series CENTRIFUGAL PUMP



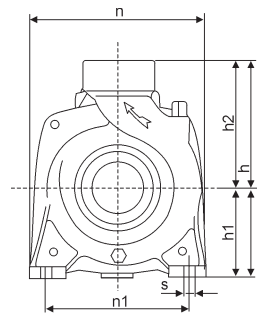
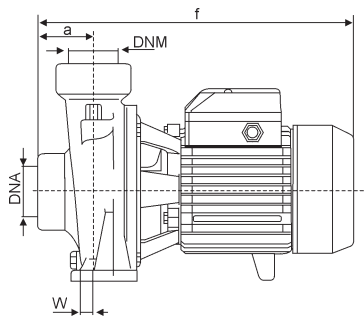
LHF1 series centrifugal pumps are single stage, high efficient electric pumps, consisted of a miniature motor and a single impeller centrifugal pump. They have a good performance in Big Capacity.

They are widely used in well-pumping, water supplying, decanting, mixing and irrigating for civil, industry and agriculture, etc.

PERFORMANCE SPECIFICATIONS

Model		Power		Q m ³ /h L/min	H												
Monofase	Trifase	HP	kW		0	3	6	9	12	15	18	21	24	30	36		
LHF1-50B	LN50B	0.50	0.37	0	0	50	100	150	200	250	300	350	400	500	600		
LHF1-50A	LN50A	0.75	0.55	9	8.5	8.2	7.5	6.3	4.9	2.8							
LHF1-51B	LN51B	0.80	0.60	12	11.5	11.2	10.6	9.6	8	6							
LHF1-51A	LN51A	1	0.75	18.2	17.2	16	14	11.5	9	5.4							
LHF1-60	LN60	1.5	1.1	21.2	20.2	19	17	14.5	11.6	8.4							
LHF1-70B	LN70B	2	1.5	29	28	26.5	24.5	22	18.5	15							
-	LN70A	3	2.2	33	32	30.5	28.5	26	22.5	19							
LHF1-5C	LN5C	0.8	0.60	39	38	36.5	34.5	32	28.5	25							
LHF1-5B	LN5B	1	0.75	12.5	--	12	11.7	11	10.2	9.2	8	6.5					
LHF1-5A	LN5A	1.5	1.1	13.7	--	13.2	13	12.5	11.6	10.5	9.2	8	5	3			
LHF1-5BM	LN5BM	1.5	1.1	14.5	--	13.8	13.5	13.2	12.6	11.8	10.5	9.2	6.5				
LHF1-5AM	LN5AM	2	1.5	20.2	--	19.2	19	18	17	16	14	12	7.5				
				22.5	--	22	21.5	21	20	18.5	16.6	14.5	10				

* 110V, 110V/220V, 60Hz etc. models are available on request.



OVERALL & INSTALLATION DIMENSIONS

Model		DNA	DNM	DIMENSIONS(mm)								
Monofase	Trifase			a	f	h	h1	h2	n	n1	w	s
LHF1-50B	LN-50B	1 1/2"	1 1/2"	45	276	200	82	118	165	135	1	10
LHF1-50A	--	1 1/2"	1 1/2"	45	283	200	82	118	165	135	1	10
--	LN-50A	1 1/2"	1 1/2"	45	276	200	82	118	165	135	1	10
LHF1-51B-A	LN-51B-A	1 1/2"	1 1/2"	45	300	225	92	133	190	160	4	10
LHF1-60	LN60	1 1/2"	1 1/2"	48.5	347	269	114	155	216	171	12	12
LHF1-70B	--	1 1/2"	1 1/2"	48.5	367	269	114	155	216	171	12	12
--	LN-70B	1 1/2"	1 1/2"	48.5	347	269	114	155	216	171	12	12
--	LN-70A	1 1/2"	1 1/2"	48.5	367	269	114	155	216	171	12	12
LHF1-B-A	LN-5C-B-A	2"	2"	60	332	238	97	141	196	160	14	11
LHF1-5BM	LN-5BM	2"	2"	51	360	260	110	150	206	160	1	11
LHF1-5AM	--	2"	2"	51	380	260	110	150	206	160	1	11
--	LN-5AM	2"	2"	51	360	260	110	150	206	160	1	11