

## JET-ST Series

### STAINLESS-STEEL SELF-PRIMING PUMP

JET-ST series self-priming pumps are high efficient jetting pump with excellent suction even when there are air bubbles. The pump consists a single impeller, centrifugal pump and a nozzle with a jetpipe. The pump body is made of stainless steel, impeller can be made of Techno-polymer(P.P.O), Brass, or Stainless steel, diffuser is made of Techno-polymer(P.P.O), and shaft is in StainlessSteel, that make the pumps more particularly suitable for water supplying in domestic installations, small-scale agriculture watering and where self-priming operation is demanded, especially for home drinking water supplying and garden irrigating.



**JETST-100**

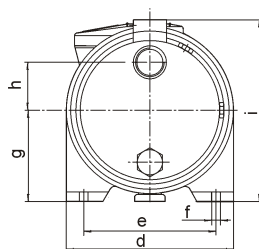
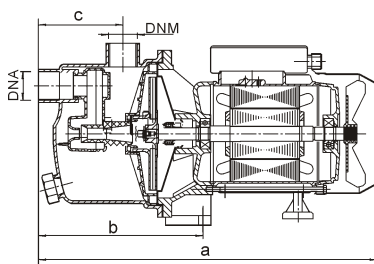
**CONSTRUCTION:**

**PUMP Peripheral**

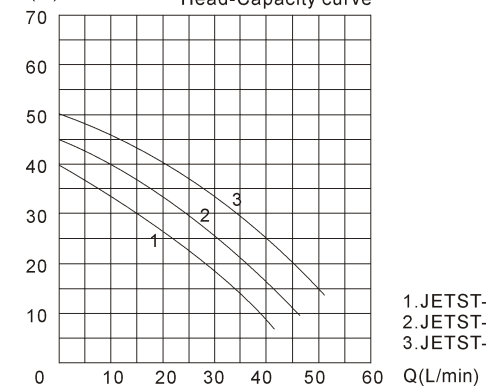
Pump Body: Stainless Steel  
 Impeller: Brass/Techno-polymer/stainless Steel  
 Mechanical Seal: Carbon / Ceramic / Stainless steel

**MOTOR Single Phase Heavy Duty Continuous Work**

Motor Housing: Aluminum  
 Shaft: Stainless Steel  
 Insulation: Class B / Class F  
 Protection: IP44 / IP54  
 Cooling: External ventilation



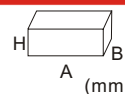
H(m) Head-Capacity curve



- 1. JETST-60
- 2. JETST-80
- 3. JETST-100

**PERFORMANCE SPECIFICATIONS**

Model	Power		Q.max. L/min	H.max. m	Suct.max. m	Speed r.p.m	Inlet/Outlet mm	PACKAGE DIMENSIONS & G.W.				
	HP	kW						A	B	H	kg	1x20"FCL
JETST-60	0.60	0.46	42	40			25x25	420	220	230	9.5	1420PCS
JETST-80	0.80	0.60	46	45	9	2850	25x25	420	220	230	10.5	1420PCS
JETST-100	1	0.75	52	50			25x25	420	220	230	11.5	1420PCS



\* 110V, 110V/220V, 60Hz etc. models are available on request.

**OVERALL & INSTALLATION DIMENSIONS**

Model	DIMENSIONS (mm)														
	DNA	DNM	a	b	c	d	e	f	g	h	i	j	k	l	m
JETST-60	1"	1"	380	190	95	194	160	8	105	56	200	--	--	--	--
JETST-80	1"	1"	380	190	95	194	160	8	105	56	200	--	--	--	--
JETST-100	1"	1"	380	190	95	194	160	8	105	56	200	--	--	--	--