

## JET-S Series SELF-PRIMING PUMP

JET-S series self-priming pumps are high efficient jetting pump with excellent suction even when there are air bubbles. The pump consists a single impeller, centrifugal pump and a nozzle with a jet pipe. The series pumps are particularly suitable for water supplying in domestic installations, small-scale agriculture watering and where self-priming operation is demanded.



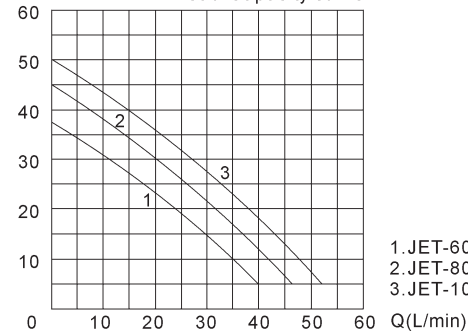
**CONSTRUCTION:**

**PUMP Peripheral**  
 Pump Body: Cast Iron  
 Impeller: Brass / P.P.O. Plastics  
 Mechanical Seal: Carbon / Ceramic / Stainless steel

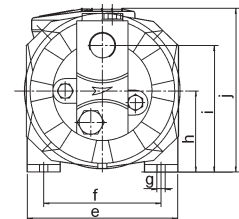
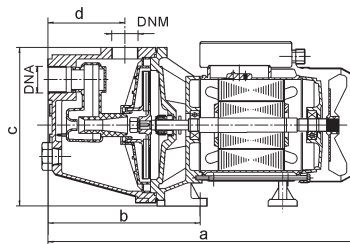
**MOTOR Single Phase Heavy Duty Continuous Work**  
 Motor Housing: Aluminum  
 Shaft: Carbon Steel / Stainless Steel  
 Insulation: Class B / Class F  
 Protection: IP44 / IP54  
 Cooling: External ventilation

**JET-100S**

H(m) Head-Capacity curve



1. JET-60S/SH
2. JET-80S/SH
3. JET-100S/SH

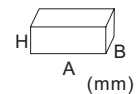


### OVERALL & INSTALLATION DIMENSIONS

| Model       | DIMENSIONS (mm) |     |     |     |     |    |     |     |    |     |     |     |    |    |    |
|-------------|-----------------|-----|-----|-----|-----|----|-----|-----|----|-----|-----|-----|----|----|----|
|             | DNA             | DNM | a   | b   | c   | d  | e   | f   | g  | h   | i   | j   | k  | l  | m  |
| JET-60S/SH  | 1"              | 1"  | 378 | 177 | 195 | 91 | 180 | 137 | 10 | 104 | 151 | 200 | -- | -- | -- |
| JET-80S/SH  | 1"              | 1"  | 378 | 177 | 195 | 91 | 180 | 137 | 10 | 104 | 151 | 200 | -- | -- | -- |
| JET-100S/SH | 1"              | 1"  | 378 | 177 | 195 | 91 | 180 | 137 | 10 | 104 | 151 | 200 | -- | -- | -- |

### PERFORMANCE SPECIFICATIONS

| Model    | Power |      | Q.max.<br>L/min | H.max.<br>m | Suct.max.<br>m | Speed<br>r.p.m | Inlet/Outlet<br>mm | PACKAGE DIMENSIONS & G.W. |     |     |      |          |
|----------|-------|------|-----------------|-------------|----------------|----------------|--------------------|---------------------------|-----|-----|------|----------|
|          | HP    | kW   |                 |             |                |                |                    | A                         | B   | H   | kg   | 1x20"FCL |
| JET-60S  | 0.6   | 0.46 | 40              | 38          | 9              | 2850           | 25x25              | 420                       | 210 | 220 | 13.6 | 1420PCS  |
| JET-80S  | 0.8   | 0.60 | 46              | 45          |                |                | 25x25              | 420                       | 210 | 220 | 14.6 | 1420PCS  |
| JET-100S | 1     | 0.75 | 52              | 50          |                |                | 25x25              | 420                       | 210 | 220 | 15.6 | 1420PCS  |



\* 110V, 110V/220V, 60Hz etc. models are available on request.