

GP Series SELF-SUCKING PUMP

GP series self-sucking water pumps are new designed high efficiency house-hold electric pumps, with the motor and the pump mounted together. They are sealed with wear-resistant mechanical sealing, and carry the merits of easy to operate, light weight, high efficiency and relative low consumption of power.

GP series pumps have self-sucking function, which make it more better for use in places that pumping clean water, and request intermission kind of working, but without refilling the water from each restarting of the pumps.



GP-125A

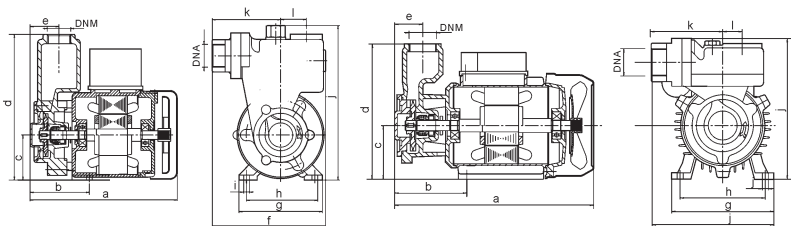
CONSTRUCTION:

PUMP Peripheral

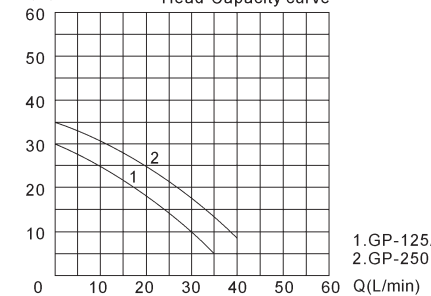
Pump Body: Cast Iron/Cast Iron with brass insert
Impeller: Brass
Mechanical Seal: Carbon / Ceramic / Stainless steel

MOTOR Single Phase Heavy Duty Continuous Work

Motor Housing: Aluminium
Shaft: Carbon Steel / Stainless Steel
Insulation: Class B / Class F
Protection: IP44 / IP54
Cooling: External ventilation



H(m) Head-Capacity curve

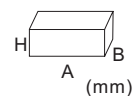


OVERALL & INSTALLATION DIMENSIONS

Model	DIMENSIONS (mm)														
	DNA	DNM	a	b	c	d	e	f	g	h	i	j	k	l	m
GP-125A	1"	1"	198	84	71	202	40	151	121	105	6	220	83	40	--

PERFORMANCE SPECIFICATIONS

Model	Power		Q.max. L/min	H.max. m	Suct.max. m	Speed r.p.m	Inlet/Outlet mm	PACKAGE DIMENSIONS & G.W.			
	HP	kW						A	B	H	kg
GP-125A	0.17	0.125	35	30	9	2850	25x25	260	200	240	6.8
GP-250	0.33	0.250	40	35			25x25	260	200	240	7



* 110V, 110V/220V, 60Hz etc. Models are available on request.