

DB Series

ELECTRIC CLEAN WATER PUMP

DB series clean water pumps are high efficient household electric pumps, with the miniature heavy-duty electric motor and the peripheral pump coupled directly. They have the advantages of simple construction, small measurement, light weight, higher head, easy operation and maintenance.

They do well in carrying clean water or the liquid whose physical and chemical nature similar to the clean water, not exceeding 40°C. They are ideal for household well water pumping, water injection supplying, car washing, and garden watering etc.



DB-750A

CONSTRUCTION:

PUMP Peripheral

Pump Body: Cast Iron

Impeller: Brass

Mechanical Seal: Carbon / Ceramic / Stainless steel

MOTOR Single Phase Heavy Duty Continuous Work

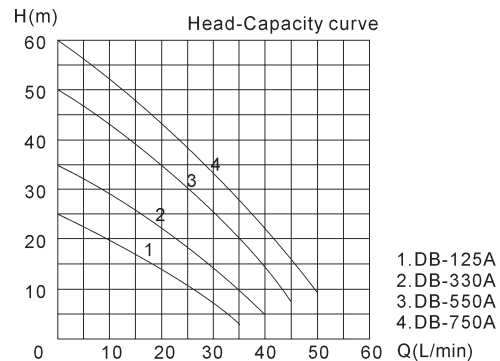
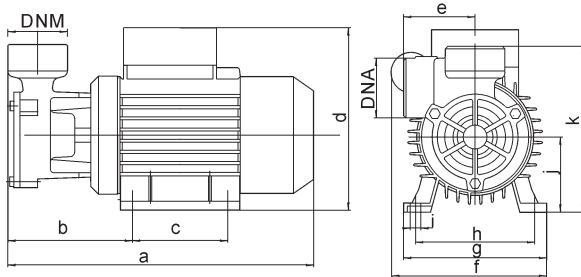
Motor Housing: Aluminium

Shaft: Carbon Steel / Stainless Steel

Insulation: Class B / Class F

Protection: IP44 / IP54

Cooling: External ventilation

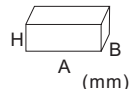


OVERALL & INSTALLATION DIMENSIONS

Model	DIMENSIONS (mm)														
	DNA	DNM	a	b	c	d	e	f	g	h	i	j	k	l	m
DB-125A	1"	1"	256	101	80	154	60	147	118	110	10	63	143	--	--
DB-330A	1"	1"	256	101	80	154	60	147	118	110	10	63	143	--	--
DB-550A	1"	1"	305	122	90	176	72	155	136	112	10	71	176	--	--
DB-750A	1"	1"	305	122	90	176	72	155	136	112	10	71	176	--	--

PERFORMANCE SPECIFICATIONS

Model	Power		Q.max. L/min	H.max. m	Suct.max. m	Speed r.p.m	Inlet/Outlet mm	PACKAGE DIMENSIONS & G.W.			
	HP	kW						A	B	H	kg
DB-125A	0.16	0.125	35	25	9	2850	25x25	280	165	180	4.8
DB-330A	0.45	0.33	40	35			25x25	280	165	180	5.2
DB-550A	0.75	0.55	45	50			25x25	335	180	200	9.0
DB-750A	1	0.75	50	60			25x25	335	180	200	10.0



* 110V, 110V/220V, 60Hz etc. models are available on request.